

# THE BROAD REACH

Volume 13, Number 5, August 2000

A Publication of The Lake Winnepesaukee Sailing Association

## Commodore's Corner

by *Bob Knowles*

The daylight hours are beginning to shorten here in August as we head to the Labor Day Regatta and the fresh breezes of September. Where has the summer gone?

With regrets the LWSA Executive Board has accepted the resignation of this year's Secretary, Donna Garland. For some ten years Donna has contributed her time and talents to the success of the organization, particularly serving on the Youth Sailing Committee and recently as an LWSA Executive Board member. I personally thank Donna for her commitment these past two years toward guiding the LWSA through the changing times.

Congratulations to the Winnepesaukee Yacht Club for having put on a truly successful Commodore's Cup Regatta this year. Commodore, Russ Thibeault chose to support the local chapter of Parents and Children Together, PACT, with the proceeds of the event and Ed Philpot, regatta chairman, put together a great weekend of racing and fun. The LWSA was pleased to provide the use of our boats for various functions, particularly our Youth Sailing fleet that enabled some great racing to be enjoyed by a large number of youngsters.

While passing out kudos, let me recognize Bob Lemaire and his J80, Blues Power for bringing down a third place finish at Marblehead Race Week in July. In a highly competitive fleet of twelve boats, Bob and crew maintained top of the fleet finishes in all five races to finish "in the money". Our lake's Fleet #1 was well represented at the event with, in addition to Blues Power, Eight Ball, Gostosa, and Pinocchio making the trip.

Look inside this issue for the announcements of this September's events. Things will start off with our feature event of the year, the Labor Day Regatta. Racing this year will be just one day on Saturday with our barbecue and Youth Sailing auction that

*(continued on Page 2)*

## 11th ANNUAL L W S A Labor Day Regatta September 2, 2000

Sponsored by  
**Fay's Boat Yard**

The LAKE WINNIPESAUKEE SAILING ASSOCIATION (LWSA), cordially invites you to participate in our 11th Annual Regatta. You are also invited to participate in a special two-handed Fun Race on Friday Evening and a fun filled "Smith Cove Raft Race" on Sunday (not part of the Regatta.. If you have never participated in a regatta before, this is the one to try.

On Saturday morning there will be a brief "Introduction to Racing" for those who are not familiar with the procedures.

Early registration is requested (there is an additional fee of \$10.00 after 8/28). Final registration will close at 9:30 AM on Saturday 9/2. The Skippers' Meeting will be held at 10:00 Saturday morning at Fay's Boat Yard in Gilford. There will be multiple classes subdivided into racing classes which can use spinnakers and cruising classes which are limited to flying headsails as defined in Racing Rule 50.4. The number of classes will be determined by the spread of the PHRF ratings of the registrants.

The racing will include as many windward-leeward races as conditions permit for the Racing Classes and triangle courses for the

Cruising Classes. There will be a completely separate starting time for the Cruising Class.

There will also be the annual "Frying Pan" two-handed race twice around Welch Island on Friday Evening, September 1 for the real fanatics. Sign up will be at Fay's Boat Yard at 5:00 PM on Friday. Sequence will start at 6:00 PM near the SW corner of Welch Island. This event is separate from the Regatta.

All boats will be rated using the PHRF handicap system. If you are racing for the first time this year, you must submit a current copy of your rating with your Entry Form. If you don't have a rating certificate, please call (603) 755-2600 to request a temporary PHRF rating. The PHRF Handicapper will issue a temporary certificate just for this event. Entry is limited to sailing vessels 20 feet or longer. We will be sailing under USSA Rules and LWSA Sailing Instructions (copies will be available at the Skippers' Meeting). We suggest that you have a copy on board. You are, of course, required to have the normal safety equipment on hand.

A limited number of overnight moorings are

*(continued on Page 3)*

**Lake Winnepesaukee Sailing Association  
& Winnepesaukee Yacht Club  
2000 Schedule of Sailing Events**

<u>Date</u>	<u>Sponsor</u>	<u>Event</u>
5/28	LWSA	Michelob Cup Race
6/3		
6/10 & 11	LWSA	W.O.O.D. Regatta (Winnepesaukee Open One Design)
6/17		
6/24	LWSA	Race to Wolfeboro
7/2	WYC	Jimmy Fund Regatta
7/8		
7/15		
7/21	WYC	Single Handed Race
7/22 & 23	WYC	Commodore's Cup Regatta
7/29	LWSA	Treasure Hunt
8/5		
8/12	LWSA	Full Moon Night Sail
8/19		
8/26		
9/1	LWSA	Frying Pan Race (double handed)
9/2	LWSA	Labor Day Regatta
9/9		
9/16 & 17	LWSA	J-Jamboree North
9/23	LWSA	Pearson, Beneteau, Catalina, J-Cruiser Regatta
10/1	WYC	Cold Duck

**Regular weekly events:**

The following events will be held each week

<u>Day</u>	<u>Sponsor</u>	<u>Event</u>	<u>Start</u>
Wednesday	LWSA	Laser & Opti Racing	1730
Thursday	LWSA	One Design Keelboat Racing	1800
Friday	WYC	PHRF Racing (WYC)	1800

**Commodore's Corner (Cont'd from Page 1)**

evening. The day will be framed by the long standing Double Handed Frying Pan Race on Friday night and the zany, fun-filled Smith Cove Rubber Raft Race on Sunday. Following along two weeks later will be the 13<sup>th</sup> annual J-Jamboree. This is where we bring in some of the top racing J24 and J80 boats from the northeast to enjoy our September winds and hospitality. This year's Jamboree will highlight a J24 District #1 Championship. Finishing out a busy September will be the annual Cruisers Race sponsored by Fay's Boat Yard. This is the bragging rights event for all the Pearson, Beneteau, Catalina/Capri, and J Boat Cruisers. I hope you will participate in these upcoming events both on and off the water. If you can help in any way please call at 603 279-8405 or our Rear Commodore, Chuck Moretti at 617 908-7111.

By the time you read this issue we will have concluded the final sessions of this year's Youth Sailing School. By all measures this year's program should be marked as having been the most productive and successful yet.

A special thanks goes out to Sue Sparks for setting up the program and budgets, recruiting a fine slate of instructors, and locating the Club 420 boats that we purchased. Thanks too go to Scott Nolan who did registrations. Thanks go to Alan Kanegsberg, Al Posnack, Dan Saliga, Bob Lemaire, and countless others who did so many of the little things that make this program work. Finally, recognition to Meg Heckman who did a fabulous job as Program Coordinator this year. We are glad to have had her talent, experience, and enthusiasm applied to every day's every moment.

We need your membership each and every year. Our dues are now just \$20. Please take a moment and renew for year 2000. If you have enjoyed any one of our events this season and like receiving the Broad Reach, send in your membership registration now and be on board. Thanks.

**Classified Advertising**

Classified ads may be placed up to two weeks prior to publication dates. Cost is \$0.50 per word for members, \$1.00 per word for nonmembers. Make checks payable to LWSA, and remit with ad to LWSA PO Box 7047, Gilford, NH 03247.



**LWSA Executive Board**

Bob Knowles, Commodore  
Brenner Fuller, Vice Commodore  
Chuck Moretti, Rear Commodore  
Alan Kanegsberg, Treasurer  
Donna Garland, Secretary

**LWSA Committees**

Chuck Moretti, Race Committee  
Susan Sparks, Youth Sailing  
Nancy Massie, Social  
Ed Philpot, One Design  
Bob Knowles, Broad Reach  
Dan Saliga, PHRF  
Bob Lemaire, Web Master

The Broad Reach is a publication of the Lake Winnepesaukee Sailing Association (LWSA), PO Box 7047 Gilford, NH 03247. It is circulated to fulfill our non-profit charter which is "...to encourage the sport of sailing..." Each issue costs approximately \$250 to produce. If you are receiving these issues as a member, we thank you for your support. If you are not a member, we ask that you consider a tax deductible membership [501(c)(3)] to help us defray publication costs. Thank you.

The Broad Reach is published on a monthly basis during the sailing season. All materials for publication are due by the 7th of the month. Publication or use of any material from The Broad Reach is not authorized without written permission. Further, The Broad Reach and LWSA disclaim responsibility for typographical errors other than the obligation to print a notice of correction.

Submit materials by mail (3.5" disk preferred) to The Editor, Bob Knowles, 52 Veasey Shore Road, Meredith, NH 03253 or Email: robtk@worldpath.net

<u>Size</u>	<u>1 Year</u>	<u>1 Issue</u>
1/2 Page	\$500	\$100
1/3 Page	\$350	\$75
1/6 Page	\$175	\$50

The Broad Reach is circulated to more than four hundred Lakes Region sailors and sailing enthusiasts. Commercial support for The LWSA, a non-profit organization, can be acknowledged with space advertising according to the above schedule. To place an advertisement contact the editor: Bob Knowles at 603-279-8405.

available at Fay's Boat Yard for the weekend on a first-come, first-served basis. If you need dockage, please contact FAY's Boat Yard directly.

On Saturday evening, the Heineken Beer Wagon will be back thanks to New Hampshire Distributors. We will provide bar set ups with ice, mixers, garnish and plastic glasses. Participants are requested to bring hors d'oeuvres. If you wish, you may bring your own liquor or wine from your boats. We will set up a table for you to leave your bottles marked with your boat's name and the honor system will be in effect. There will be a catered Barbecue, a brief Fund Raising Auction with the proceeds going to support the Youth Sailing Program and an awards ceremony.

An Official Entry Form can be obtained by calling 603-279-8405 or at Fay's Chandlery. Please fill it out and return it at your earliest opportunity to the LWSA at the address indicated.

On behalf of the Race Committee, The LWSA, and our sponsor Fay's Boat Yard, we look forward to seeing you.

*Chuck Moretti, Rear Commodore*

## LWSA - FAYS 11<sup>th</sup> ANNUAL REGATTA SCHEDULE OF EVENTS

### Friday, September 1, 2000

- 1700 - Sign up and Skippers' Meeting (Fay's Boat Yard) for two-handed race for the "Frying Pan Trophy". This will be a fun race and is NOT part of the weekend Regatta. The race will be twice around Welch Island.
- 1800 - Starting sequence begins near the Southwest mark off Welch Island.

### Saturday, September 2, 2000

- 0930 - Final registration closes for all boats ("Rec Room" Fay's Boat Yard)
- 1000 - Skippers' Meeting ("Rec Room" Fay's Boat Yard)
- 1130 - Starting Sequence begins (south of Welch Island)
- Racing Classes
  - Cruising Classes (no spinnakers, gennakers, etc)
  - Races will be run around buoys. Cruising Classes may be sent on Island Courses.
- 1700 - Heineken Beer Wagon opens, hors d'oeuvres (Participants are requested to bring hors d'oeuvres), setups, ice, etc (Fay's Rack Storage Barn)
- 1800 - Barbecue (Fay's Rack Storage Barn)
- 1900 - Awards Ceremony (Fay's Rack Storage Barn)
- 1930 - Auction to benefit Youth Sailing School

### Sunday, September 3, 2000

- 1100 - The Annual Smith Cove "Raft Race" for all ages. This is a fun event and is not part of the Regatta

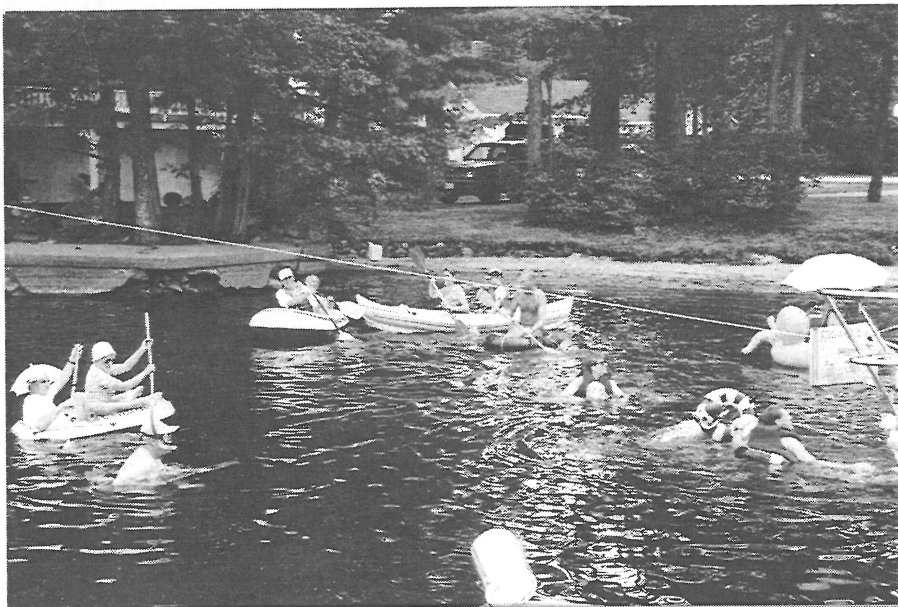
## Smith Cove Rubber Raft Race

### Classes

Single Handed - Double Handed -  
Handicapped - Children under 12

### Rules and Regulations

- All rafts must have one person treading water at the start
- First Place is automatically disqualified (they must have cheated)
- Each 2 person raft must be manned by two different sexes (male/female)
- who ever rows or paddles one way cannot row or paddle back to the finish
- double handed racers must change places at the halfway mark
- single handed racers must change rafts with other single handed racers at the halfway point
- cheating is permitted - just don't get caught
- **YOU MUST HAVE FUN!!!**



## Treasure Hunt

Eight boats visited such places as Nipple Rock, the Bear Island Post Office, and the Gilford Town Beach in Sanders Bay during their search for some of Tom Mullen's great "creative" clues at the Treasure Hunt event. The weather cooperated on Saturday, July 29<sup>th</sup> as the fleet moved about interpreting each clue as if they were Mystery!'s Hercule Poirot.

Once again, this event brought out some first time participants as well as the return of two longstanding racers. We welcome Le Bon Temps and the Simpsons who have yet to name their boat. Old timers Saphire and Boreas came out and enjoyed the fun. Come on out again! You Hear?

The Treasure Hunt participants included; Boreas, Christina, Good Stuff, Halekala, Le Bon Temps, Lily Pad, Saphire, and the Simpsons. The final clue sent the crowd to Gretchen'' Bistro in Glendale where the lounge opened early for the group to enjoy apres race cocktails. Winners taking home a bottle of Korbel Champagne were Haleakala in third place, Christina and Good Stuff in a tie for second, and Dan Saliga's Lily Pad in the top spot. The general consensus, "Everyone had a great time!"

## BOAT FOR SALE

Looking for a boat? Know someone that is? A generous supporter to our organization donated a Capri 22 sailboat to the LWSA. Proceeds from its sale will be applied toward the cost of the Youth Sailing School's new fleet of Club 420s. Help us sell this boat.

**1985 Capri 22** Fine 22 foot, fractional rig sloop. Has Catalina main sail and jib, racing package (deep fin keel, tall rig, traveler, backstay, and adjustable sheets/ hal-yards), full electrical system, a forward V-berth, two quarter berths and an aft berth, and a Trail Rite trailer with guide-on. This is a fresh water boat in very good condition. Asking \$6,000.

To see this boat, call Sean Mulligan at Fay's Boat Sales 603 293-0700.

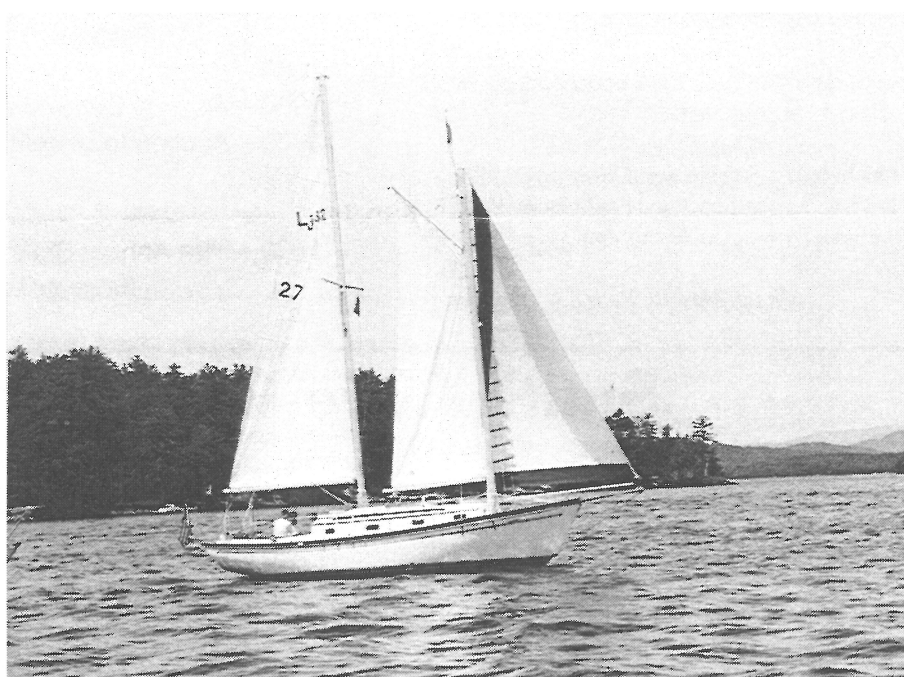
## Full Moon Sail

The clouds cleared, the breeze came up and eight boats were off shortly after 5PM on Saturday, August 12<sup>th</sup> on this year's Full Moon Sail. With the fleet sitting in dead air as starting time approached, Race Officer Chuck Moretti, shortened the intended course of Three Mile to Parker Island to a Six Mile Island to Diamond Island run. Literally at the starting horn, a southeasterly breeze set in and the boats were off, taking Welch Island to starboard before bearing off onto a fast reach up to Six Mile. The beat down to Diamond provided plenty of time for the fleet to spread out. Once around Diamond, the racing boats were able to set spinnakers and fly to the finish off of Belknap Point.

The nice 10-knot breeze along with the near

full moon's appearance for the run back to the finish provided a great feeling for all participants. It was nice to see once again some new boats come out for one of the events. The following boats were on the line this year. In Racing, C'est La Vie, La Vela, Pinocchio, and Schatz. In Cruising, Kia Ora, Lily Pad, Sea Horse, and Wind Dancer.

Awards were presented at a wonderful Brunch on Sunday morning at the William Tell attended by 25 LWSA members and friends. The Spinnaker division awards went to; 1<sup>st</sup> - Schatz, 2<sup>nd</sup> - Pinocchio, 3<sup>rd</sup> - C'est La Vie. Cruising division winners were; 1<sup>st</sup> - Lily Pad, 2<sup>nd</sup> - Sea Horse, 3<sup>rd</sup> - Kia Ora. A special thanks to Chuck Moretti, his daughter, and Donna Fletcher for once again running a fine, fun race.



*Gary Braun's 2 masted Kia Ora readies for the start of the 2000 Full Moon Sail*

Waxing  
Wet Sanding  
Compounding  
Shrink Wrapping  
Snow Plowing  
Sanding

Mobile Service  
Rug Cleaning  
Bottom Washing  
Reasonable Rates  
Bottom Baint

## DIAMOND SHINE

BOAT DETAILING  
Come on and Shine  
John D. Spooner

PO Box 5195  
Weirs Beach, NH 03247

Res: 603-366-7742  
Pager: 603-596-4871  
Fully Insured



# Youth Sailing Program Update

by Meg Heckman, YS Coordinator

A record number of camper registrations, six new double handed boats, and an active junior race team have lent themselves to the most successful season in recent memory for the Youth Sailing School.

The re-newed enthusiasm produced by the 420s early in the season has carried through into August aided by dinghy racing at the Commodore's Cup and several batches of brand new campers experiencing the sport for the very first time.

Despite grim weather forecasts and a light and lumpy start to racing at the Commodore's Cup, the weekend proved to be a wonderful competitive experience for sailors of all ages and produced a good deal of publicity for the program. Fifteen young athletes duked it out in Lasers in light and shifty air on Saturday and then proved their mettle in big breeze and wild waves on Sunday. The six 420s were planning on all legs of the course and the Opti kids were hiking hard to keep their boats flat and fast.

The competitive pursuits of our young racers have not been limited to the lake however. On August 12 and 13, Katie McMenaman, Katie Kuzdzal, Stu Johnson, and Jonathan Ewing traveled to the District Seven Radial Championships in Rockport, MA. Following is their account of the wild weekend:

As we pulled into the Sandy Bay Yacht Club parking lot at 7:00 Saturday morning, our smiles couldn't get any bigger when we saw the eight foot rollers coming through the breakwater and a steady 25 knot breeze blowing in. The only thing we could say was, "Oh my God!!!!!!".

Highlights of this memorable event included: seasickness striking even before the first race for one unlucky sailor, deathrolls in the harbor way too close to the rocks, nailing a kayaker in the back of the head, (accidentally of course, but hey he got in MY way!!), slam gybes that leave their mark on foreheads, and lobster pots that look like people (we think Stu drank too

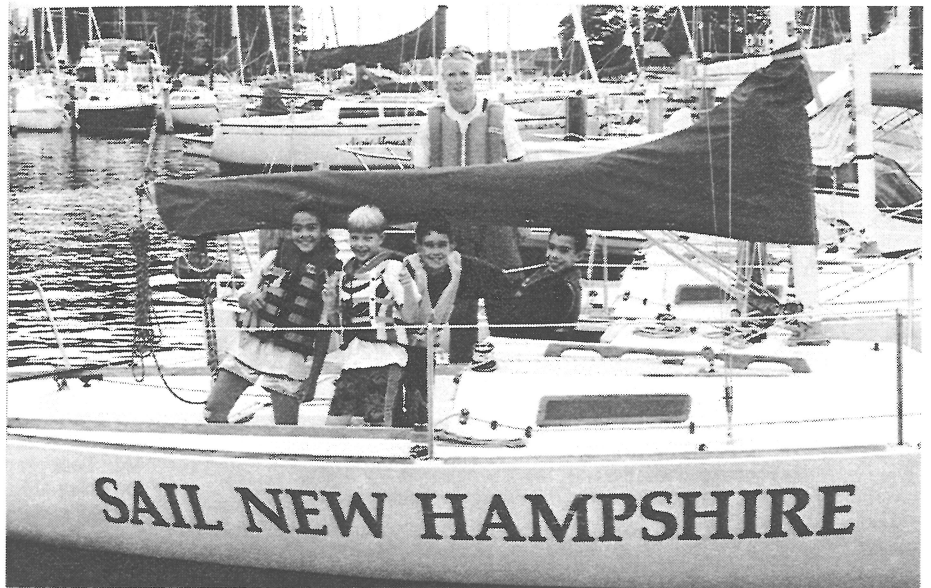
much salt water). And that was only the first day, so we drove home, not nearly getting enough sleep, and headed back for more punishment.

The second day had even more wind and more chop, but thankfully smaller rollers. The seasick sailor made it back out, finally

finished a race, and brought home a trophy. Harbor Patrol came in handy on more than one occasion, but, despite all these mishaps, it was the most awesome race we have ever been to. Sailing on the lake will never be the same!



*The Sailing School youngsters enjoyed an afternoon out on J/80's - Gostosa, Lavela, and Schatz*



*Special thanks to Brian Richardson and the Sail NH boats for being available for the youngsters to experience "big boat" sailing*

# OFFICIAL NOTICE OF RACE

## LAKE WINNIPESAUKEE SAILING ASSOCIATION

### 11th ANNUAL LABOR DAY REGATTA

Saturday, September 2, 2000

**RULES:** The race will be governed by *The Racing Rules of Sailing*, the prescriptions of US Sailing, the rules of PHRF New England or one-design classes, the LWSA/WYC Combined Sailing Instruction for the 2000 season, and any other applicable rules.

**ELIGIBILITY:** Any boat over 20 feet possessing a current PHRF certificate may participate. Boats that do not have a current certificate may compete by obtaining a temporary certificate. Such boats are advised to pre-register to allow sufficient time for accurate handicapping.

**ENTRY & FEES:** Boats must register by submitting a completed Official Entry Form along with a check made out in the appropriate amount payable to LWSA. Pre-registration should be postmarked no later than August 28, 2000 and mailed to LWSA, PO Box 7047, Gilford, NH 03247. The registration fee is \$35 (\$30 for USSA members). There is a late fee of \$10 for entries received after August 28, 2000. Additional fees may be paid for social activities ashore. See entry form for details.

**CLASSES:** Boats must register to compete in either the PHRF Racing or PHRF Cruising Division. Cruising Division may not use spinnakers as defined in racing rule 50.4. The divisions will be further subdivided as required.

**ADMINISTRATION:** Race headquarters for the event will be "The Rec Room" at Fay's Boat Yard, 71 Varney Point Road, Gilford, NH. Additional forms may be obtained in person at the Chandlery at Fay's or by calling Chuck Moretti at 617-908-7111 (leave a message).

**RACING AREA:** Races will ordinarily be started on "The Broads". In the case

of extreme conditions, the race committee may elect to start races south-west of Welch Island.

**COURSES:** The race committee will set "Buoy" or "Island" courses as it deems appropriate for each class. Course signals will be posted on the committee boat as per the Sailing Instructions. Island courses may be set for Cruising Classes if conditions warrant.

#### SCHEDULE:

Saturday, September 2, 2000

0900 Registration, Pickup Packet

1000 Skipper's meeting

1130 Warning signal for first race

Social activities and prize giving ashore to follow racing (See master schedule)

**SKIPPER'S MEETING:** Race packet with Sailing Instructions and class assignments will be available at the skippers meeting on Saturday. A Skippers Meeting will be held as per the schedule to reiterate information contained in the Notice of Race and Sailing Instruction and to answer questions.

**SCORING SYSTEM:** The low-point scoring system (Appendix A2 of the racing rules) will apply. One race will constitute a regatta. All races will be counted.

**PRIZES:** First and Second Place awards will be made in all classes and Third Place Awards will be made in classes with five or more boats.

## OFFICIAL NOTICE OF RACE

### LAKE WINNIPESAUKEE SAILING ASSOCIATION

#### ANNUAL DOUBLE HANDED FRYING PAN RACE

Friday, September 1, 2000

1. **RULES:** The race will be governed by *The Racing Rules of Sailing*, the prescriptions of US Sailing, the rules of PHRF New England, the LWSA/WYC Combined sailing instruction for the 2000 season, and any other applicable rules.

2. **ELIGIBILITY:** Any boat over 20 feet possessing a current PHRF certificate may participate. This is a double handed event. Boats are restricted to a Skipper and one crew member.

3. **ENTRY & FEES:** Boats must register by submitting a completed Entry Form along with the entry fee of \$15 (\$10 for US Sailing members). Registration is at 1700 Friday, September 1, 2000 at Fay's Boat Yard.

4. **CLASSES:** Boats must register to compete in either the Racing or Cruising Division. Cruising class may not use spinnakers as defined in racing rule 50.4

5. **RACING AREA:** The race will be started south-west of Welch Island.

6. **COURSES:** The course is traditionally twice around Welch Island. The official course will be posted on the Race Committee Boat as described in the Sailing Instructions. The race committee may shorten the course to once around by displaying code flag S before the first boat passes the Start/Finish line.

7. **SCHEDULE:** Friday September 1, 2000  
1700 Registration & Skippers Meeting  
1800 Warning Signal

8. **SKIPPER'S MEETING:** A Skippers Meeting will be held at Fay's Main Dock per the schedule to reiterate information contained in the Notice of Race and Sailing Instructions and to answer any questions.

9. **SCORING SYSTEM:** Finishing position is determined by corrected PHRF time.

10. **AWARDS:** The winner of each division will enjoy the distinction of having their accomplishment recorded on the perpetual "Frying Pan" trophies which hang in the Fay's Boat Yard Chandlery.

## Notice of Race

### Fay's "Pearson, Beneteau, Catalina/Capri, J-Cruiser"

### Saturday September 23, 2000

**Invitation:** The LWSA is pleased to invite all sailors to the Fay's Boat Yard Annual Cruisers Race.

**Eligibility:** The race is open to the named brands of sailboats over 20' that have PHRF ratings.

**Rules:** This regatta will be governed by the 1997-2000 *Racing Rules of Sailing* (RRS) including US Sailing Prescriptions, this notice (except as modified by the Sailing Instructions), and the Sailing Instructions.

**Scoring:** The Low Point Scoring System (Appendix A2) will be used.

**Entry:** The entry fee is \$15 (\$10 for USSA Members) by cash or check payable to the LWSA.

**Site:** Racing will take place around islands on Lake Winnepesaukee. The course will be announced at the Skippers' Meeting.

**Prizes:** Prizes will be awarded to the top 3 finishers in each class.

**Awards:** After the race in the Fay's Rec Room. Please bring munchies.

**Schedule:** Saturday September 23  
 1030 Registration at Fay's  
 1100 Skippers' Meeting  
 1200 Warning Signal

**Note:** This will be a "Reverse Start" pursuit event. Boats will be handicapped at the Skippers' meeting and will be issued individual "Delay Times" based on the course length and PHRF Rating. After the starting signal, individual boats will start after their "Delay Time" has elapsed.

**Contact:** Chuck Moretti 617-908-7111

## 2000 LWSA Membership Registration

Name: \_\_\_\_\_

Street: \_\_\_\_\_

City: \_\_\_\_\_ State: \_\_\_\_\_ Zip: \_\_\_\_\_

Home Phone: \_\_\_\_\_ Work Phone: \_\_\_\_\_ Lake Phone: \_\_\_\_\_

E-Mail Address: \_\_\_\_\_

Boat Make and Length: \_\_\_\_\_ Boat Name: \_\_\_\_\_



### US Sailing Association



Please process my **USSA Membership** for 2000 at the individual rate of \$35, (instead of the regular rate of \$40). I understand that as a member of USSA that I will receive a discount of \$5.00 or 10% of each racing registration fee for having race insurance through USSA. USSA Membership includes a Rule Book, a subscription to *Sailing World* or *Cruising World* magazine and all other membership benefits.

Visit [www.ussailing.org](http://www.ussailing.org) for details



Sign me up for a one year BoatUS membership at the special LWSA rate of just \$9.50 (a savings of 50% off the regular rate of \$19). Member benefits include a subscription to BoatUS Magazine, a copy of the 700+ page BoatUS Discount Equipment Catalog, On-the-Water Towing, the availability of low cost boat insurance, and much more. Visit [www.boatus.com](http://www.boatus.com) for details.

Please rush my BoatUS Membership Application at the special LWSA rate. I am a \_\_\_\_\_ New \_\_\_\_\_ Renewing BoatUS member

I/we are enclosing the following:

\$ \_\_\_\_\_ for LWSA Membership Family \$40 - Individual \$20

\$ \_\_\_\_\_ for LWSA Junior Dues (Wed Night Racing) 18 & under - \$10

\$ \_\_\_\_\_ for US Sailing Membership (LWSA Members only) Individual \$35 - Youth \$10

\$ \_\_\_\_\_ **TOTAL ENCLOSED**

Signed: \_\_\_\_\_ Date: \_\_\_\_\_

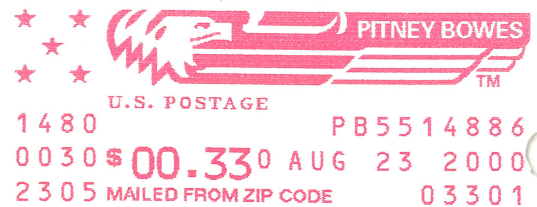
Mail to: Lake Winnepesaukee Sailing Association, PO Box 7047, Gilford, NH 03247



P.O. Box 7047  
Gilford, NH 03247-7047

**August 2000**

Postmaster: RETURN SERVICE REQUESTED



Membership Expires 2000

Donna & Robert Garland  
17 Floyd Road  
Derry, NH 03038

## Special Invitation Boat Yard Barbecue

From FAY'S BOAT YARD and the LWSA  
There will be an AUCTION after the Dinner

You are invited to a celebration of a great Summer Season

Saturday, September 2 (Labor Day Weekend) at Fay's Rack Storage Building  
**Catered Barbecue** (Chicken, Ribs, Corn, Salads, etc) at 6:00 PM

Tickets \$15.00 each - Heineken Beer Bracelets \$5.00 each - Reservations Req'd by 8/28

**Children UNDER 13 can have Hot Dogs or Hamburgers for \$5.00 each**

LWSA  
PO Box 7047  
Gilford, NH 03247-7047

OR  
Purchase Tickets at  
Fay's Store before August 28

**Because this is a catered barbecue, we must have a count of attendees by 8/28.**

If you wish to attend, please mail a check (with a note as to what tickets you want) to:

If you wish, you may call 603-293-8000 before August 28 and leave a message that you will be coming and how many will be there. You may pay for your tickets at the door. (You will have to pay if you don't show up)

\_\_\_\_\_ Barbecue Tickets at \$ 15 ea    \_\_\_\_\_ Bracelets at \$ 5 ea\*    \_\_\_\_\_ Kids at \$5 ea

\*Heineken Beer will be included with the additional purchase of a Bracelet for \$ 5.00 per person.